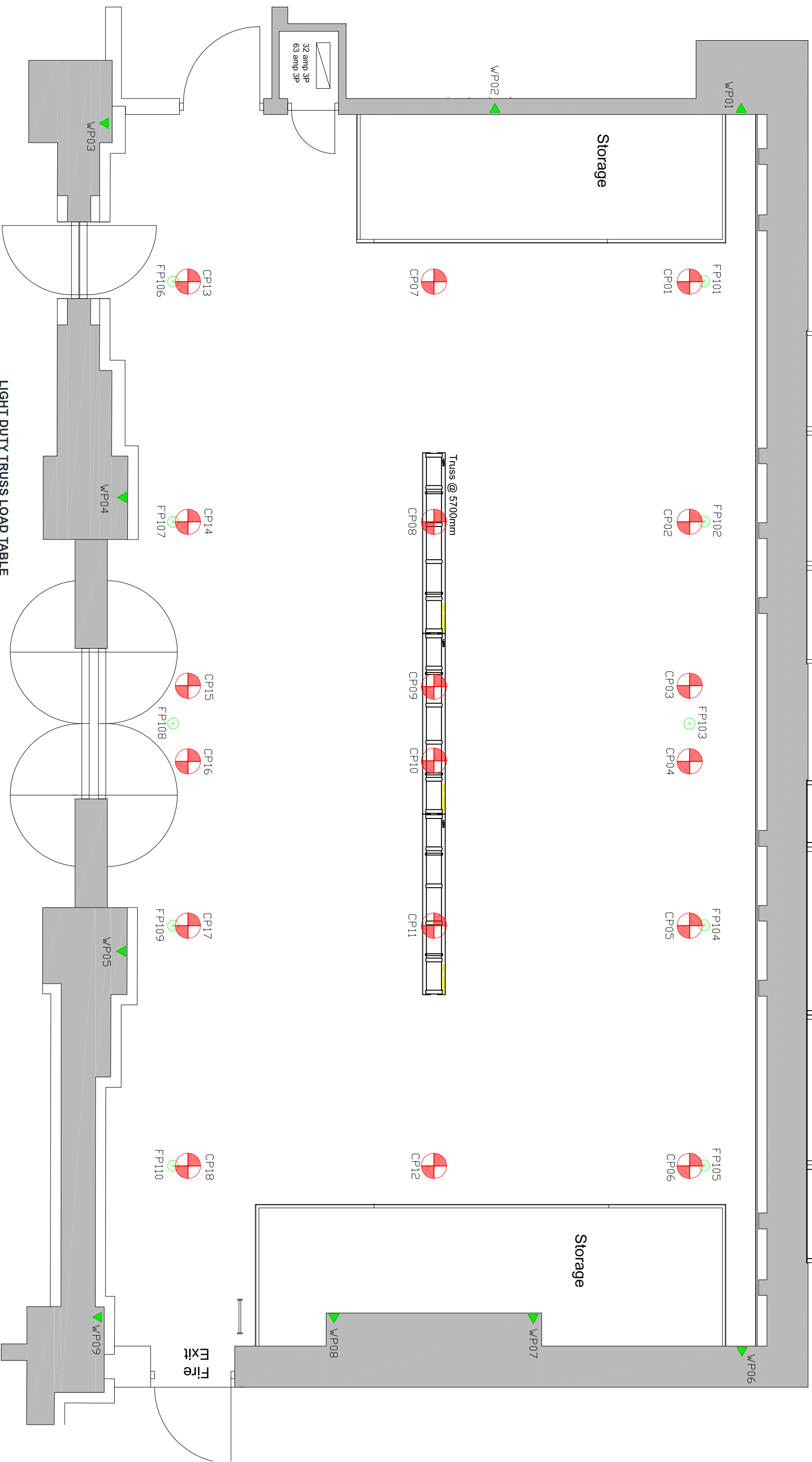


DO NOT SCALE



Key

- Floor Rigging point SWL 5000kg
- Ceiling Rigging Point SWL 5000kg
- Wall Rigging Point SWL 5000kg



LIGHT DUTY TRUSS LOAD TABLE

SPAN (METERS)	2	4	6	8	10	12	14
LUDL kg	1599	1579	1369	994	762	542	288
DEFL mm	1	6	18	44	51	69	73
CPH kg	629	610	592	497	380	271	144
DEFL mm	0	4	13	27	42	58	64
TPL kg	315	305	295	286	276	204	108
DEFL mm	0	3	11	26	51	70	74
QPL kg	275	268	262	249	191	136	46
DEFL mm	0	4	13	31	49	67	55

Creation Studio

- 12.9m x 8.3m clear floor space. Height to ceiling 6.1m.
- Permanently rigged truss at 5.7m with three multiple purchase lifting systems. Other rigging options available.
- 10 x 500kg SWL Floor points spread down either side of the room.
- Additional 500kg ceiling and wall rigging points available on request.
- Wall points are approx 3100mm above floor
- The allowable loads are maximum static equivalent loads which can be safely applied to the truss and/or points.
- No allowance has been made for dynamic loads.

national centre for circus arts

Coronet Street, London, N1 6HD
Tel: 020 7615 4141
www.nationalcircus.org.uk

project	client	date
venue CREATION STUDIO		JUNE 2016
drawing title	scale	
Plan - showing floor and ceiling points	1:50 on A3	
drawn by	drawing no.	